

STATE OF MINNESOTA, }  
COUNTY OF MURRAY, } ss.

I hereby certify that the within instrument was filed in this office for record on the 30<sup>th</sup> day of AUGUST A.D. 20 19 at 9:00 o'clock A. M. and was duly recorded as Document No. \_\_\_\_\_

Evelyn C. Larson   
County Recorder

Index No. \_\_\_\_\_ R-21

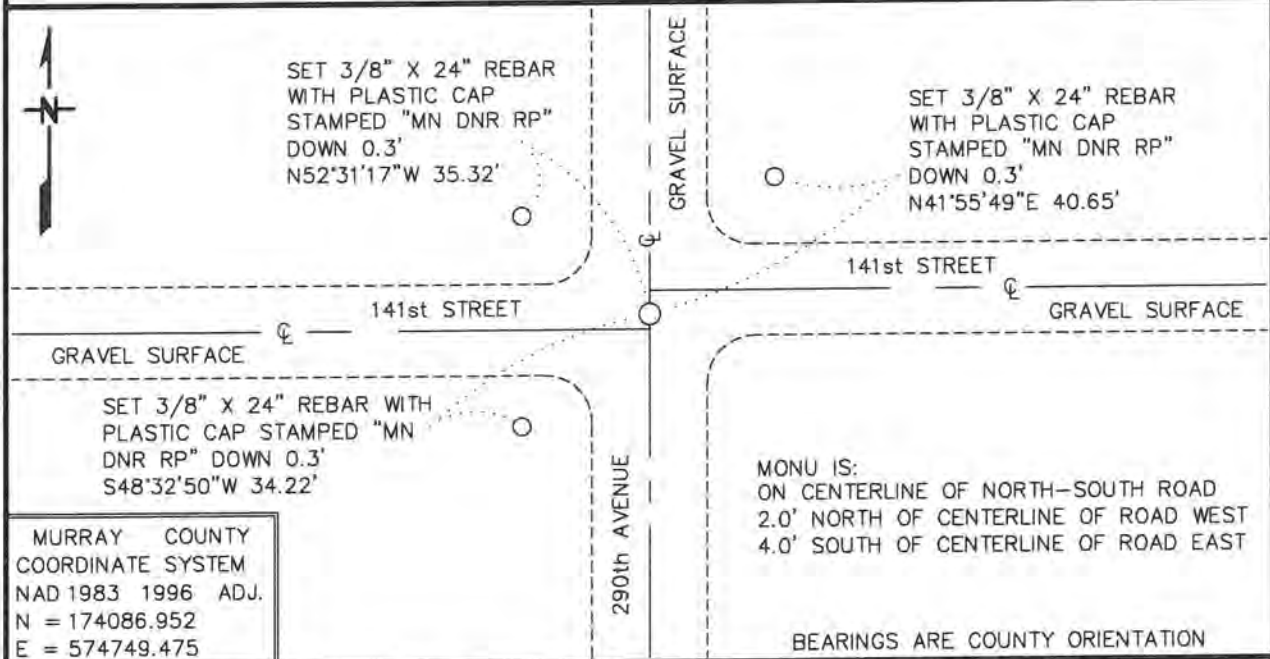
# CERTIFICATE OF LOCATION OF GOVERNMENT CORNER

NORTHEAST Corner of Section 26, Township 107 N, Range 39 W

5TH Principal Meridian, State of Minnesota, County of MURRAY

At the corner location shown on the sketch:

- On 10/18/2017 found a 1/2" DIAMETER IRON PIPE, DOWN 0.7'  
DATE
- left monument as found,     lowered monument,     removed monument (explain)
- On 10/18/2017 Placed a PLASTIC CAP STAMPED "MN DNR LS 17003", ON  
DATE TOP OF FOUND IRON PIPE



Statement of evidence for this corner location is on back of this page.

APRIL 2018  
WMA00745

I hereby certify that this plan, specification, or report was prepared by me or under my direct supervision and that I am a duly Licensed Land Surveyor under the laws of the State of Minnesota.

SIGNATURE

Bruce W. Shepperd  
BRUCE W. SHEPPERD

DATE

8/15/19

License Number

17003

Northeast Corner of Section 26, Township 107 North, Range 39 West

**For additional information see:**

1985 November, Lowell R. Pommerening Jr., PLS 17005, with the Minnesota Department of Natural Resources filed a Certificate of Location of Government Corner for this corner in the Murray County Recorder's Office.

The DNR Division of Lands and Minerals contacted the following for survey information:

Website - [mngeo.state.mn.us](http://mngeo.state.mn.us) for GLO plat and field notes

Website - [murray-countymn.com](http://murray-countymn.com) for section and quarter section corner information

Murray County Recorder's Office

Zieske Land Surveying, Inc. of Windom

- 1861 U.S. General Land Office notes, obtained from [mngeo.state.mn.us](http://mngeo.state.mn.us), show the corner marked with a wood post set in mound of earth with pits and trench dug around the mound. Also, planted Alder seed between the four pits and trenches.
- 2000 April 10, ties to Government Corners, obtained from [murray-countymn.com](http://murray-countymn.com), show that Zieske Land Surveying found a ½ inch iron pipe with cap No. 13593, 8 inches deep at the corner.
- 2002 May 15, a Certificate of Survey in the North Half of the Southwest Quarter of Section 24, obtained from Zieske Land Surveying, Inc., shows that a ¾ inch iron pipe was found at this corner. The corner is shown:  
2635.01 feet from the east quarter corner of Section 23
- 2017 October 18, the DNR Division of Lands and Minerals visited the area of the corner and found a ½ inch diameter iron pipe, down 0.7 of a foot. A plastic cap stamped "MN DNR LS 17003" was set on top of the found iron pipe and found it to be:  
2635.11 feet from the east quarter corner of Section 23  
2637.29 feet from the east quarter corner of Section 26  
2654.51 feet from the north quarter corner of Section 25  
on the center line of north-south 290<sup>th</sup> Avenue (gravel surface)  
2.0 feet north of the center line of a gravel road west  
4.0 feet south of center line of a gravel road east

Analysis of the above information led the DNR Division of Lands and Minerals to conclude that the found iron pipe, which was set over a stone in 1981, marks the location of the corner. Searched for but found no evidence of the record ties.